



Options for Financing Care Management Entities:

Wraparound Milwaukee's Pooled Funding Model

Bruce Kamradt, MSW
Director, Wraparound Milwaukee
June 23, 2010

*CHIPRA Care Management Entity Quality Collaborative
Technical Assistance Webinar Series*



What is Wraparound Milwaukee?

- A unique system of care for families and children who have serious emotional, mental health or behavioral *needs* that:
 - Cross two or more child-serving systems;
 - Have persisted for six months or more;
 - Cause some functional impairment at home, school or in the community; and
 - Place them at risk for out-of-home placement in residential treatment, juvenile correctional care, a psychiatric hospital, or other facility
- Operated by the Milwaukee County Behavioral Health Division, Wraparound Milwaukee functions as its own managed care entity, pooling funding across systems and managing the care of all children in the target group regardless of the system they came from
- Serves 1500 youth annually

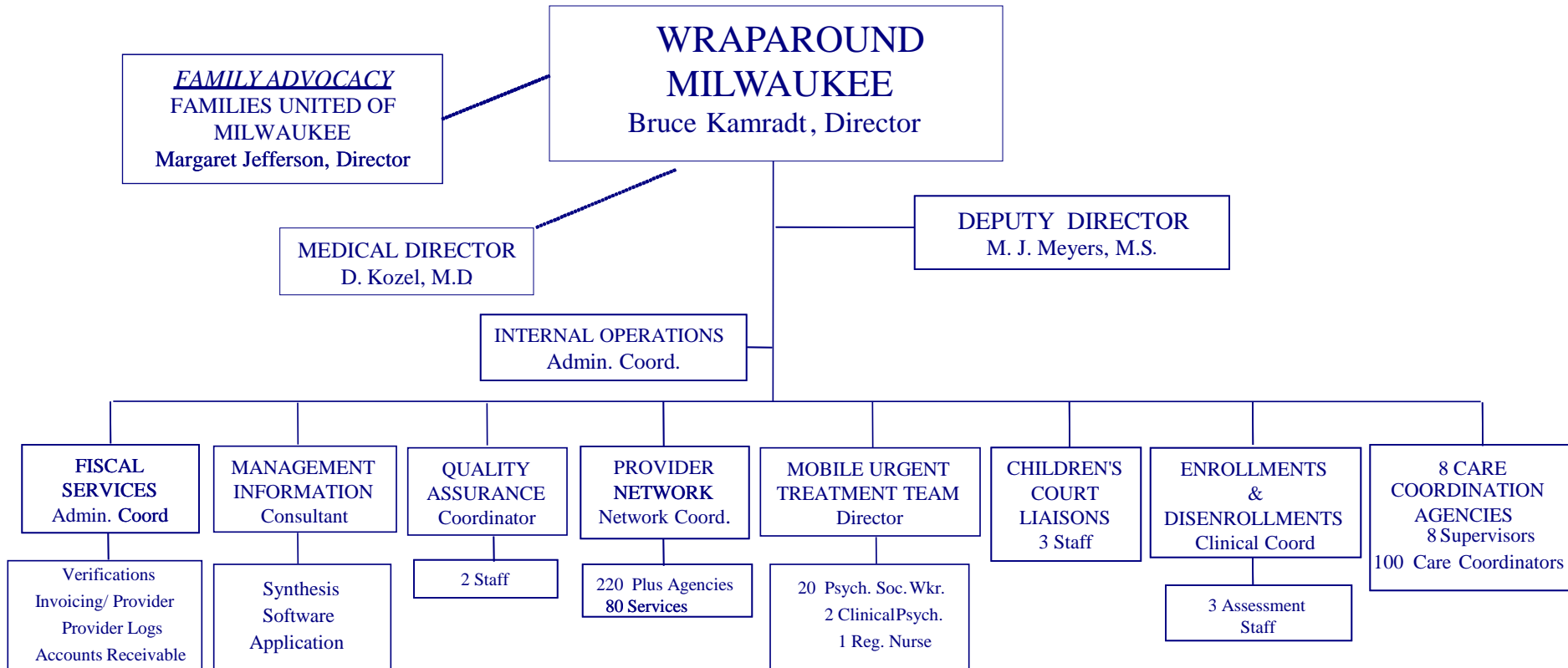




Administrative and Service Structures of Wraparound Milwaukee – What Does It Need to Do

- Screening /assessment of youth
- Enrollment
- Care coordination
- Development and maintenance of a provider network
- Crisis intervention
- Clinical oversight
- Development of informal community supports
- Quality Assurance
 - Utilization Management
 - Evaluation
- Finance
 - Service Authorization/Claim Processing
 - Reports
- IT
- Contracting with other systems
- Developing and supporting family advocacy organization
- Liaison with court system

Wraparound Milwaukee Organizational Chart



Background for Development of Wraparound Milwaukee

- Initiated in 1995 under SAMHSA grant
- Focused on target population of youth due to:
 - Over-utilization of residential treatment (375 youth in residential treatment)
 - Budget deficits for Milwaukee County
 - Poor outcomes for youth returning from institutional care
- Pilot project in 1995-96: “25-Kid Project” showed that Wraparound-based system of care could be successful in effectively and safely returning youth to their home and community
- Funding structures, including contract with Medicaid as special managed care entity, put in place in 1996-1997



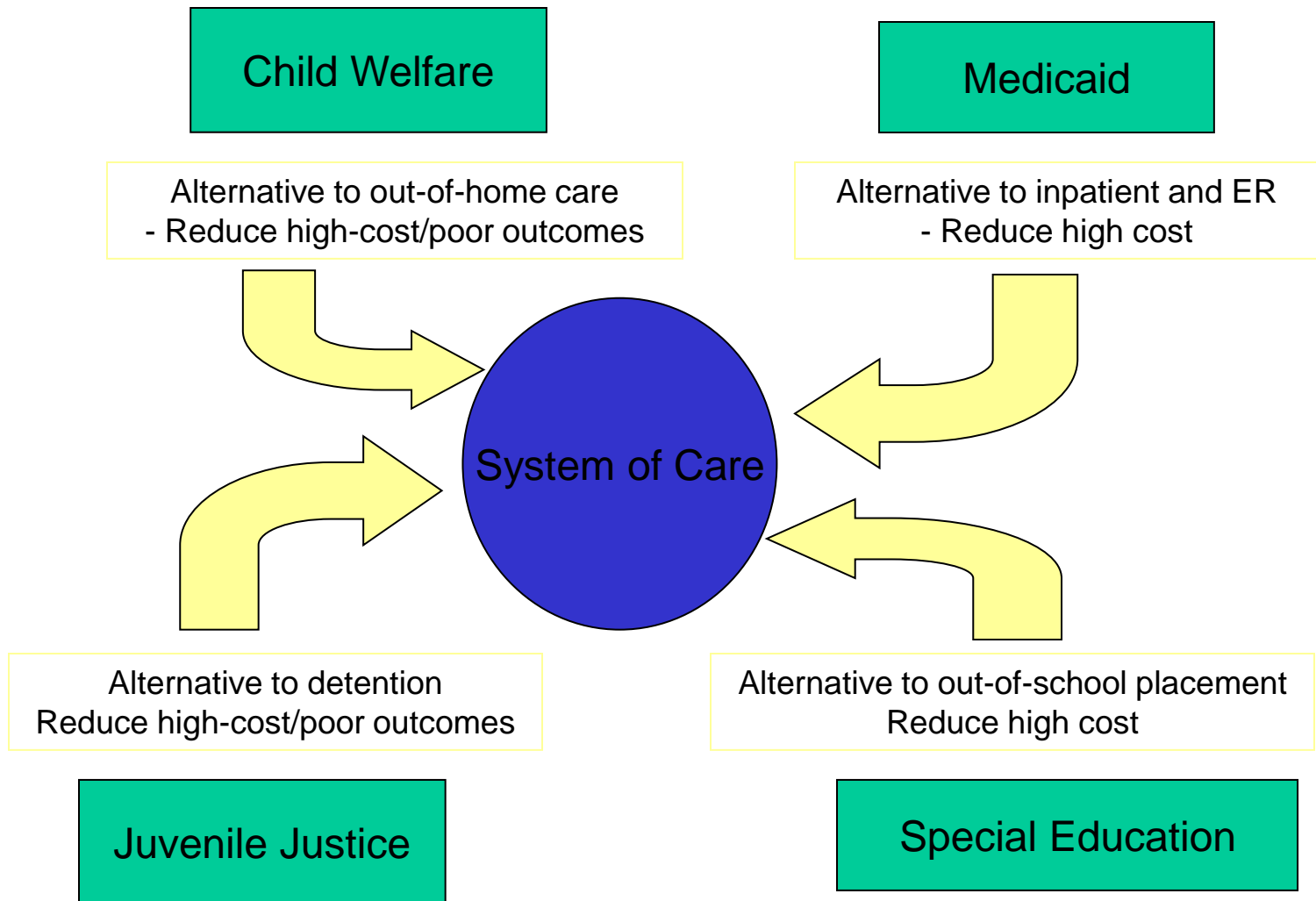
Key Child-Serving Agencies Contracting With Wraparound Milwaukee

- Bureau of Milwaukee Child Welfare
 - State-Administered / Privately Operated
- Milwaukee County Children's Court
 - Delinquency Services
- Division of Health Care Financing
 - State Agency Operating Medicaid
- Milwaukee County Behavioral Health Division



Wraparound Milwaukee Funding

Creating "Win-Win" Scenarios

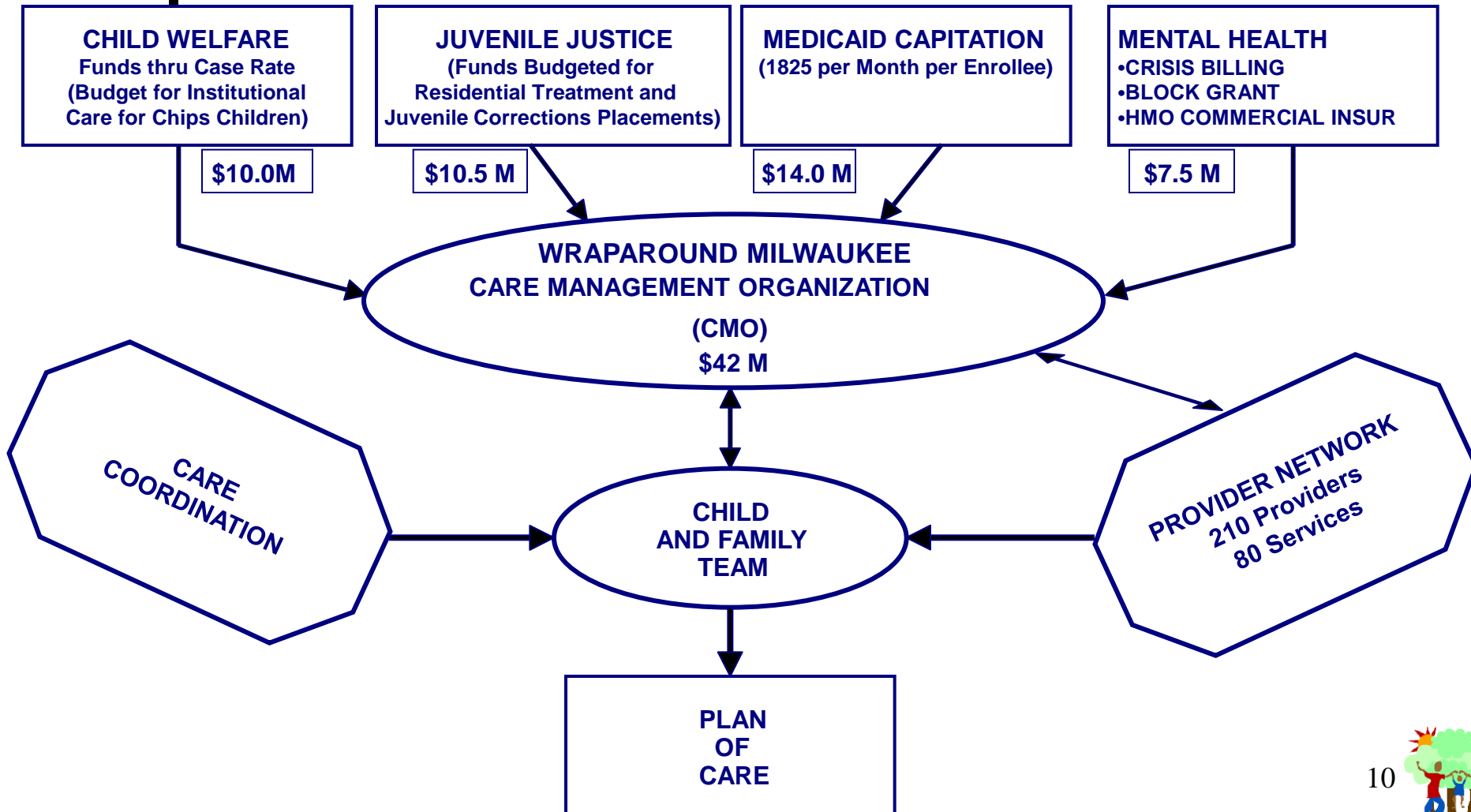


Wraparound Milwaukee's Funding Model

- Blended Funding Pool
 - Medicaid : capitated rate and fee-for-service for crisis services
 - Child Welfare: case rate agreement with Department of Children and Family Services
 - Delinquency Services: fixed annual funding and case rate for diversions from juvenile corrections
- Principal approach is to re-direct money from institutional to community-based care
- Contract with Medicaid as a special, publically operated managed care entity
- Under 1915(a) authority
- Wraparound Milwaukee is the single payor for all services for enrolled youth and is at risk for service costs
- Wraparound Milwaukee utilizes a provider network, pays providers on a fee-for-service basis and sets rates it pays providers
- All care coordination agencies, mental health and support service providers are on Wraparound Milwaukee's Synthesis IT system
 - Services are authorized, claims processed and providers paid electronically



What are Pooled Funds?





Advantages of Blended or Pooled Funding

- Flexibility
- Adequacy
- De-categorization of funds
- Responsiveness to changing needs
- Lends itself to managed care approaches
- De-politicizes allocation and awarding of funds



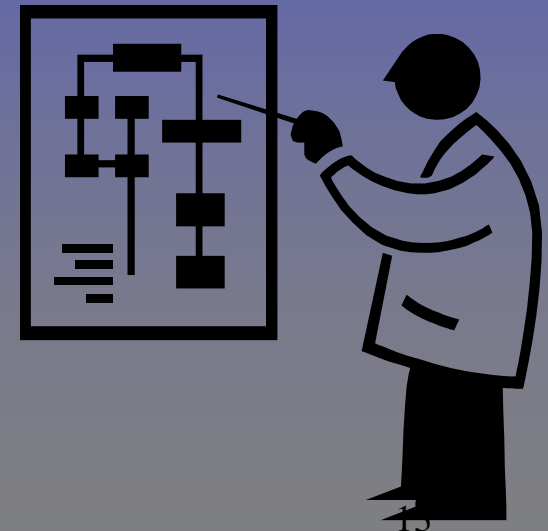
List of Available Services in Social/Mental Health Plan

- Case Management
- Referral Assessment
- Medication Management
- Outpatient
- Individual/Family
- Outpatient - Group
- Outpatient - AODA
- Psychiatric Assessment
- Psychological Evaluation
- Mental Health
- Assessment/Evaluation
- Inpatient Psychiatric
- Nursing
- Assessment/Management
- Consultation with Other Professionals
- Daily Living Skills - Individual
- Daily Living Skills - Group
- Parent Aide
- Child Care
- Housekeeping
- Mentoring
- Tutor
- Life Coach
- Recreation
- After-School Programming
- Specialized Camps
- Discretionary Funds
- Supported Work Environment
- Group Home Care
- Respite
- Respite - Foster Care
- Respite - Residential
- Crisis Bed - RTC
- Crisis Home
- Foster Care
- Treatment Foster Care
- In-Home Treatment (Case Aide)
- Day Treatment
- Residential Treatment
- Transportation



SERVICE STRUCTURES

Delivery of Wraparound Approach & Processes



Mobile Crisis Team

- Available 24/7
- Mobile Crisis gatekeeps inpatient care
- Crisis is defined as a situation in which a child's behaviors threaten removal from school, home, etc.
- M.U.T.T. assesses situation, identifies alternative to hospitalization and makes referrals as needed to:
 - Crisis intervention
 - Short-term case management
 - Intensive case management - 30 Days
 - Family preservation services - 60 Days
 - Crisis group home



Care Coordination Services

- Meet the child and family
- Strength-based inventory
- Convene child and family team to develop the Wraparound Plan
- Establish goals
- Identify and prioritize needs
 - Formal services from a provider network
 - Informal services within family's support system
- Obtain commitments to implement plan
- Evaluate and modify plan as needed



Provider Network

- 80 Services
- No formal contracting -- services purchased on a fee-for-service basis -- rates established by Wraparound Milwaukee
- Extensive quality assurance/quality monitoring
- Residential treatment vendors were asked to re-engineer institutional services to community-based services
- Consumer choice of providers
- All providers and care managers linked through internet-based IT system for authorizations, plan submission, invoicing, etc.





Family Advocacy Component Families United of Milwaukee

- Advocacy
- Support groups & activities
- Family & system education
- Satisfaction surveys
- Serve on committees, boards, etc.
- Train care coordinators
- Crisis intervention
- Resource development
- Develop newsletter, brochures, other info





Program Outcomes



Outcomes - Program

- Average daily residential treatment population reduced from 375 placements to 80 placements (FOCUS Project: 15-20)
- Psychiatric inpatient utilization reduced from 5000 days per year to less than 200 days (avg. length of stay of 2.3 days)
- Reduction in Juvenile Correctional commitments from 385 to 185 per year





Outcomes - Financial

- Wraparound Milwaukee's average monthly cost is \$3900 per child per month, versus
 - \$8600 per child per month for residential treatment
 - \$8000 per child per month for a correctional placement
 - \$1600 per day for psychiatric inpatient care



Questions?

