



NWI Webinar Starting Soon!

In the meantime, please note...

- We recommend that you close all file sharing applications and streaming music or video.
- Check your settings in the audio pane if you are experiencing audio problems.
- During the presentation, you can send questions to the webinar organizer, but these will be held until the end.

This webinar and the PowerPoint will be available on the NWI website at <http://nwi.pdx.edu/previous-nwi-webinars>.





Social
TecKnowledge
Santa Fe, NM



TMS-WrapLogic



NWI Webinar
June 2, 2015

Kelly Hyde, Ph.D.
Social TecKnowledge, Inc.

Eric J. Bruns, Ph.D., April Sather, MPH, and Hattie Quick, MSW
University of Washington



The *mission of the NWI* is to promote understanding about the wraparound model and its benefits, and to provide the field with resources and guidance that facilitate high quality and consistent wraparound implementation.

The National Wraparound Initiative:

Supports **community planning and implementation**

Promotes **professional development** of wraparound staff

Helps ensure **accountability**

Convenes a vibrant and interactive **community of practice** around wraparound implementation

www.nwi.pdx.edu





NWIC

National Wraparound
Implementation Center

*Advancing Systems ✦ Enhancing the Workforce ✦
Improving Outcomes*



Portland State
UNIVERSITY



UNIVERSITY of MARYLAND
SCHOOL OF SOCIAL WORK

THE INSTITUTE FOR INNOVATION & IMPLEMENTATION



Social TecKnowledgegy

TMS-WrapLogic is a comprehensive, web-based health information technology system

- Serves as an Electronic Behavioral Health Record (EBHR) and Measurement Feedback System
- Designed to assist the Wraparound Process and other types of integrated, team-based service approaches



Why did we develop TMS-WrapLogic?

- Outcomes of collaborative care are more positive when decisions are informed by reliable & relevant information
- States, initiatives, and providers have often struggled to find ways to manage data and information in a way that is in line with wraparound principles and needs for documentation, billing, and high-level reporting on costs and outcomes

Why did we develop TMS-WrapLogic?

- Prominent wraparound initiatives have developed excellent MIS systems that are critical to their success
 - However, these are locally specific and don't always translate easily to new sites/states
 - NWI aims to provide wraparound sites with a field-tested, usable, model adherent EBHIS as well as all needed supports:
 - Customization/configuration, data integration
 - Training, help-desk, 24-7 backup
 - Ongoing research and reliability testing
 - Meaningful use certification, security (HIPAA-FERPA)



TMS-WrapLogic has received substantial federal support

- U.S. Department of Health and Human Services
 - NIMH (R41 MH095516 / R42 MH095516)
 - Child Adolescent and Family Branch, SAMHSA
 - Center for Medicaid and Medicare Services (CMS)

TMS-WrapLogic provides a way to manage and access key information on the wraparound process



- Individuals engaged in the process
 - Youth and family members, team members, providers, natural and community supports, coordination of care
- Key documentation
 - Plans of care, strengths, needs, family stories, family history timeline, meeting and appt. times, meeting notes, contact histories, critical incidents, services and costs
- Service processes
 - Family Satisfaction, Fidelity, Progress toward needs
- Outcomes
 - CANS data, youth and family support, residential status, educational environment and behavior, youth functioning

TMS-WrapLogic is intended to facilitate more effective wraparound... for one youth or an initiative of hundreds

- At a youth/family and team level:
 - Aid communication between team members
 - Allow transparency in information sharing
 - Assist in documentation compliance
 - Help keep teams on track:
 - What are the priority needs? What are the strategies to meet each need?
 - Are we making progress?
 - Is the process working for the family and team?



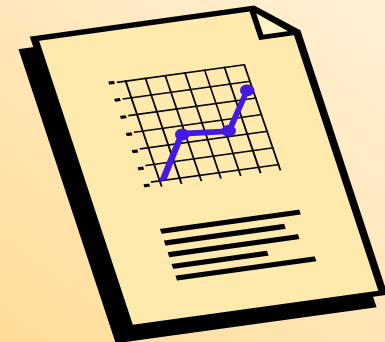
TMS-WrapLogic is intended to facilitate more effective wraparound... for one youth or an initiative of hundreds

- At higher levels:
 - Supports data-driven supervision
 - Facilitates evaluation
 - Of staff performance
 - Of initiative process and outcomes
 - Allows managers and administrators (at program, initiative, county, state levels) to monitor implementation, outcomes, service use, and costs in “real time”



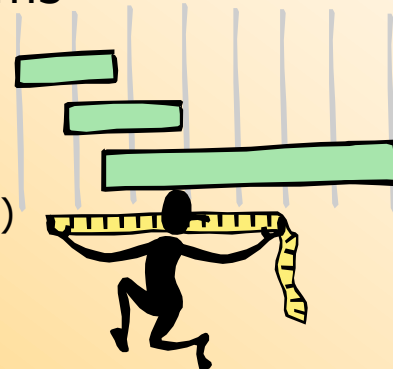
TMS-WrapLogic will also provide a platform for entering, managing, and running reports for fidelity instruments

- The Wraparound Fidelity Assessment System:
 - Wraparound Fidelity Index (WFI-4)
 - WFI-Brief version (WFI-EZ)
 - Team Observation Measure (TOM)



TMS-WrapLogic is comprehensive but user friendly

- Users log on via a single point-of-entry
- Each user has a unique “configuration” that is custom-designed to the local initiative or ‘System of Care’
 - Flexible number of Roles and Permission
 - Flexible Language and Nomenclature
 - Individualized Work Flow Tracker
 - Service array, providers, and billing rate per unit
 - Required documentation
 - Data integration with other local/state data systems
 - Customization of features / assessments
 - Data elements
 - Standardized measures (e.g., CANS, CAFAS, CASII, PHQ-9)
 - Dashboard design



TMS-WrapLogic is comprehensive but user friendly

- Information access is permissions-driven and can be accessed from any computer with Internet access
- The User's Home Screen shows a summary of all current youth/staff on a configurable Dashboard based on their level of access
- Users (e.g., facilitators) have access to a task pane for each youth that keeps them on track with needed documentation
- The system allows quick movement among the different functions of the system
- Team Facilitators can set up youth and family with specific login to access dashboards, data in need of review and signature, meeting information and team member message board

WrapTMS is secure and compliant

- TMS-WrapLogic meets all Health Insurance Portability and Accountability Act (**HIPAA**) and Family Educational Rights and Privacy Act (**FERPA**) requirements
- **Coming Soon**-TMS will be designed to meet certification as an **Electronic Health Record (EHR) no later than 12/2015**

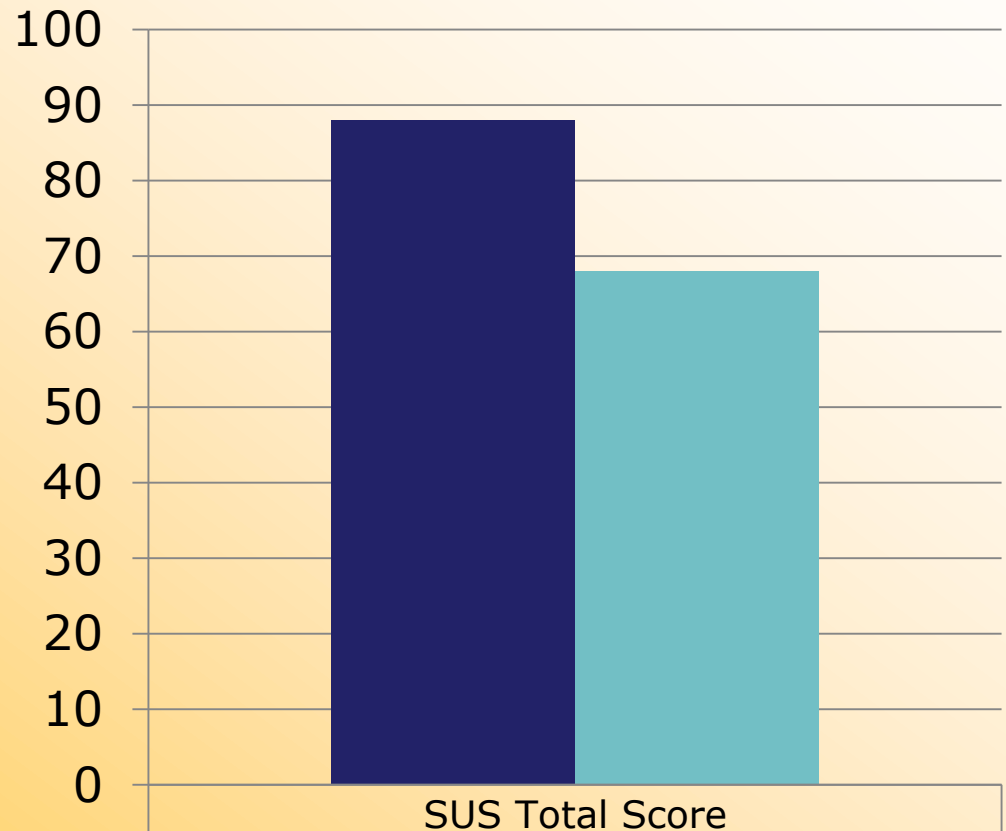


TMS-WrapLogic testing to date

- Licensed for use and installed in:
 - Three large multi-site wraparound initiatives (two statewide)
 - Five small local wrap provider organizations
- Federally-funded user testing:
 - Subjected to lab-based testing with wrap facilitators and supervisors
 - Currently being tested in the field by 6 initiatives

TMS-WrapLogic User Testing: Results to date

High overall
usability
scores on
System
Usability
Scale (SUS)*



*Bangor, Kortum,
& Miller, 2008

■ TMS-WrapLogic average	88
■ SUS Total Score Benchmark	68

TMS-WrapLogic User Testing: Results to date

Scenario	Expected Ease of Use (Pre)	Actual Ease of Use (Post)
Enter youth into TMS and schedule a team meeting	3.95	4.43
Understand youth progress, make decisions about upcoming meetings, and organize paperwork	3.83	4.75
Design and complete a Plan of Care	3.48	4.30

Note: 1=Lowest ease of use; 5=Highest ease of use

TMS Licensing Model: SaaS Software as a Service

- Social TecKnowledgy hosts the system on its own servers in its own data center and provides access on a subscription basis
 - Provides initial training, implementation and help desk support
 - Offers separate data solutions and customization packages to include data integration/interoperability functionality



What will TMS-WrapLogic cost to users?

TMS Costs:

A. Initial training, implementation and Set Up Cost

B. Software Licensing Cost-Based on number of user licenses; Can be billed monthly or annually

C. Customizations, interoperability, on-going development support, and data solutions are in addition to above costs



Demonstration

-General user functions (Coordinators/Supervisors)

-Administrative Functions

Kelly Hyde, Ph.D., CEO
Social TecKnowledge, LLC.

TMS Licensing Model: SaaS Software as a Service

- Social TecKnowledgey is cloud based and maintained by Social Teck staff.
- Provided in a SaaS-software as a service subscription model.
 - Provides initial training, implementation and help desk support
 - Offers separate data solutions and customization packages to include data integration/interoperability functionality



What will TMS-WrapLogic cost to users?

TMS Costs:

A. Initial training, implementation and Set Up Cost

B. Software Licensing Cost-Based on number of user licenses; Can be billed monthly or annually

C. Customizations, interoperability, on-going development support, and data solutions are in addition to above costs

How do I inquire further about using TMS-WrapLogic?

- If interested in more information on TMS system, please contact Social TecKnowledge or the UW Wraparound Evaluation and Research Team (WERT)
- klhydephd@socialteck.org
- wrapeval@uw.edu



How do I inquire further about using TMS-WrapLogic?

- Interested organizations can also request a demo and with signed disclosure access to a data populated trial TMS site for 30 day to test TMS system and functionality.

klhydephd@socialteck.org

– wrapeval@uw.edu