

New Findings from the *Community Supports for Wraparound Inventory*

29th Annual Research and Policy Conference
Child, Adolescent and Young Adult Behavioral Health
March, 2016

Janet Walker, PhD
Shawn Mehess, PhD Candidate
Portland State University



Portland State
UNIVERSITY



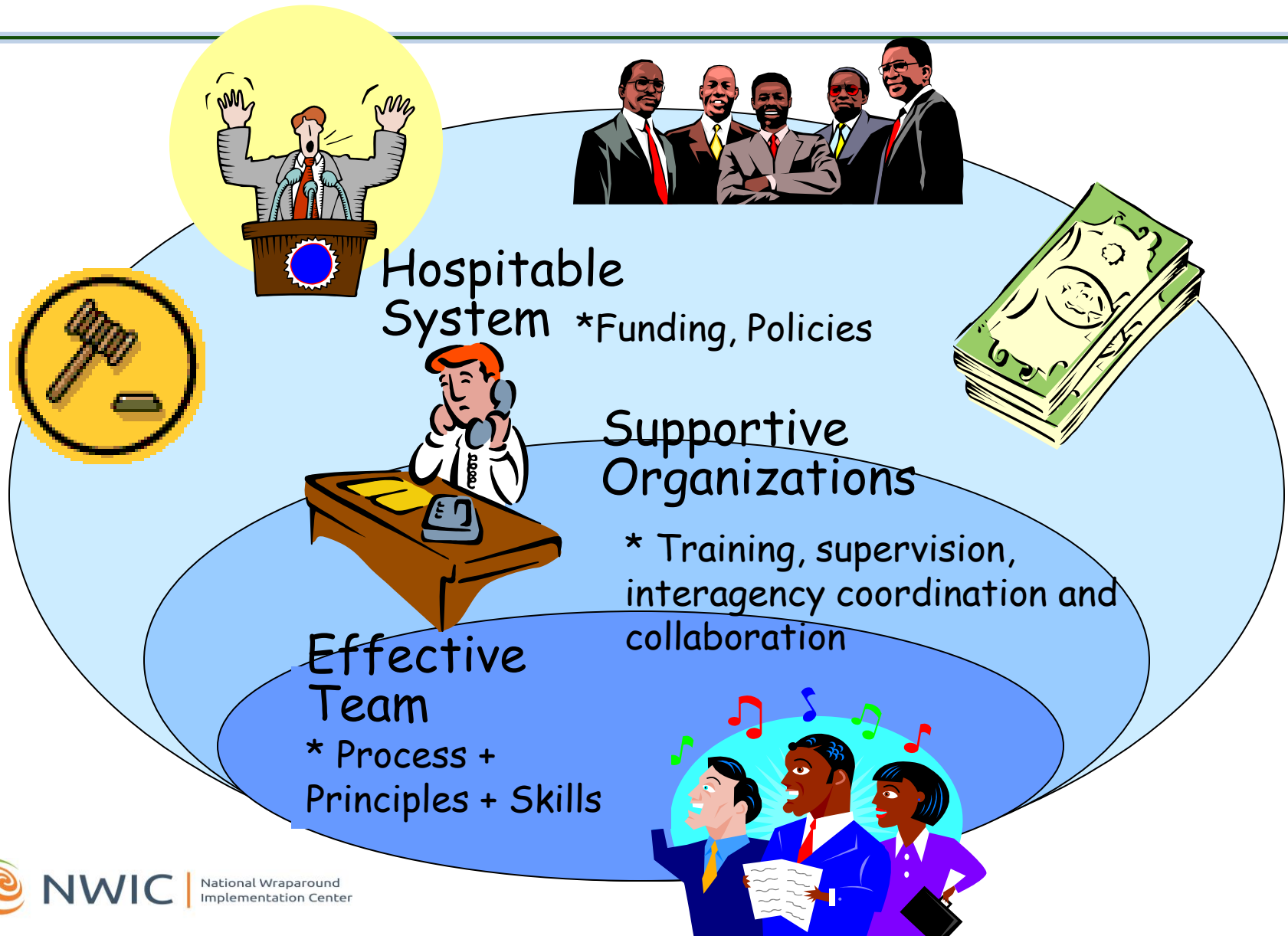
University of Washington



UNIVERSITY of MARYLAND
SCHOOL OF SOCIAL WORK

THE INSTITUTE FOR INNOVATION & IMPLEMENTATION

The implementation context



Background- Rationale

- The *Community Supports for Wraparound Inventory* assesses a community's system-level support for Wraparound
 - Multi-system collaboration is crucial to create a policy and funding context that is hospitable to Wraparound
 - System support linked to Wraparound fidelity (Bruns, et al., 2006)
- CSWI is strengths-based, and built on the idea that communities gradually develop the capacity to support Wraparound

Background- Development

- Based on research on the “Necessary Conditions” for Wraparound that emerged from a qualitative study (Walker & Koroloff, 2007)
- Refined through a formal consensus-building process using advisors of the National Wraparound Initiative (Walker, Bruns & Penn, 2008)
- Evidence for reliability and validity emerged from the study of first seven communities (Walker & Sanders, 2011); Factor structure confirmed in multi-level CFA on CSTI/SSTI (Walker, Koroloff and Meheess, 2015)
- Modest revisions after initial study

Structure of the CSWI

The CSWI includes 42 items grouped into six themes:

- *Theme 1: Community Partnership*
- *Theme 2: Collaborative Action*
- *Theme 3: Fiscal Policies and Sustainability*
- *Theme 4: Access to Needed Supports & Services*
- *Theme 5: Human Resource Development & Support*
- *Theme 6: Accountability*

Items & Reporting

- Each item has two “anchor” descriptions
 - “Least developed”—absence of collaboration
 - “Fully developed”—seamless support and collaboration
 - Each item rated on a 5-point scale
 - “don’t know” option
- Community report
 - Information on the sample and response
 - Scores for entire CSWI and each theme and item, and how these relate to national means
 - Areas of greatest strength and challenge
 - Respondents’ comments

Administration

- CSWI is administered as a web-based survey
 - Communities identify a local lead who works with NWIC to create a list of stakeholders who have appropriate knowledge
 - Stakeholders include family, wraparound staff, partner staff, administrators
 - Stakeholders receive a link to the survey
 - Local lead and NWIC work to achieve good response
 - Stakeholders can decline the survey, counts as non-response
- CSWI used in 7 sites in the original study, and 35 additional sites 2010-2015
- Mean response rate 69%

Overall and Theme Means and Comparison

Overall Mean

Theme 1: Community Partnerships

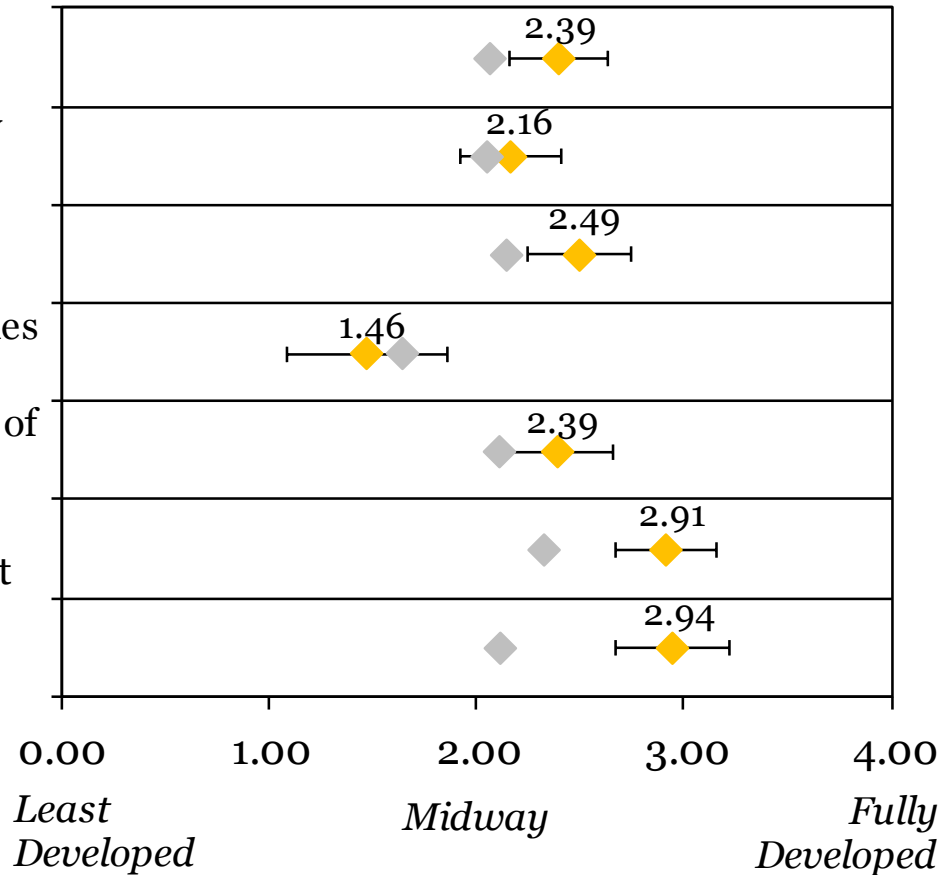
Theme 2: Collaborative Action

Theme 3: Fiscal Policies and Sustainability

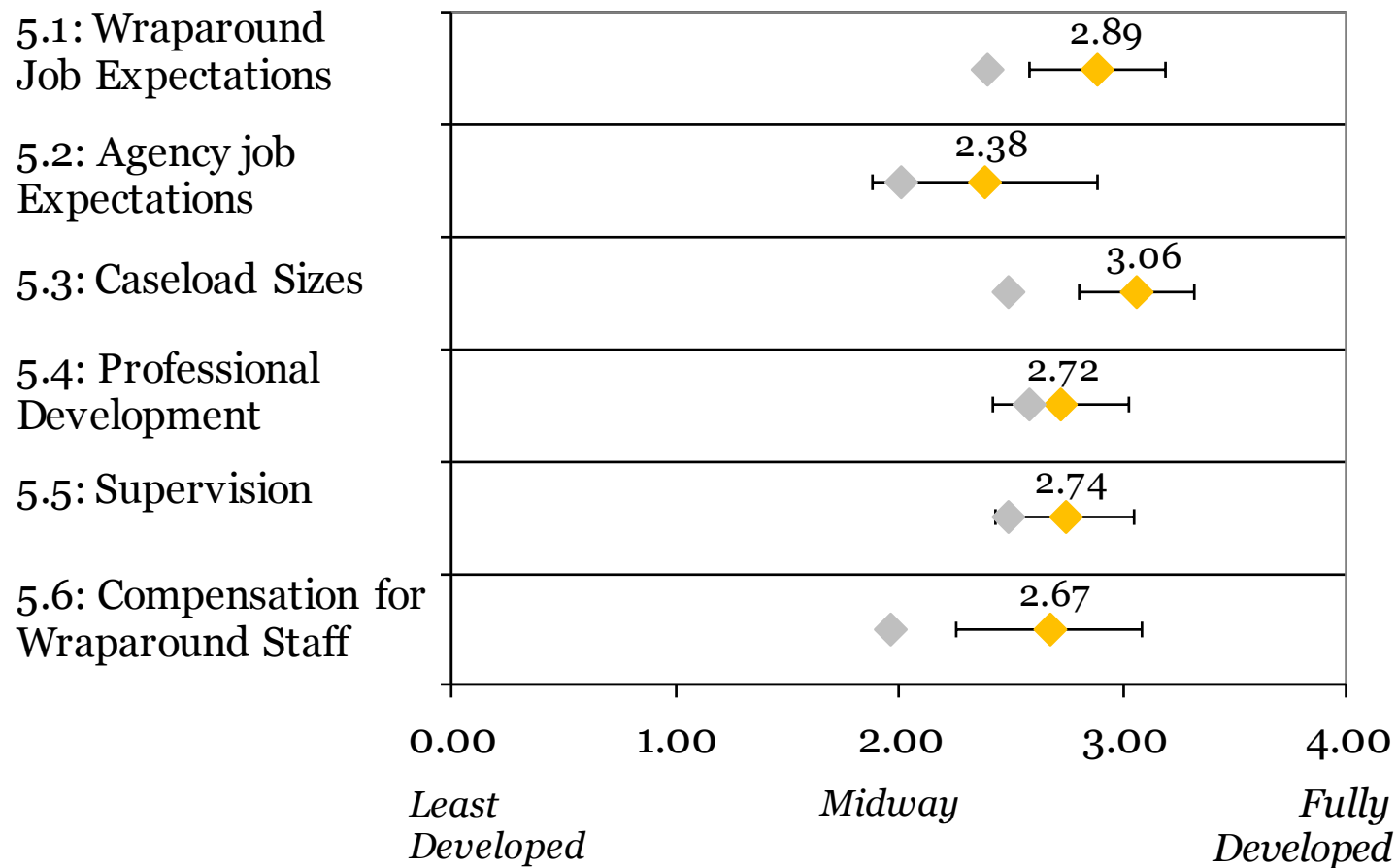
Theme 4: Availability of Services and Supports

Theme 5: Human Resource Development

Theme 6: Accountability



Theme 5: Item Means and Comparison



Respondents

- 54 dropped due to insufficient data

Overall	1100
Role	
family/youth consumer	10
family advocate/partner/provider	82
wrap facilitator/care coordinator or supervisor	286
non-wrap direct service provider or supervisor	199
human service organization mgr/admin	35
other admin	331
community partner	24
trainer; consultant; researcher	5
other	125
(no response)	3

Respondents

Race		
	African-American	64
	Asian-American	16
	Caucasian/European American	926
	Latino/Hispanic	47
	Native-American/American Indian	14
	Other	7
	(no response)	26
Received Intensive Services		
	Yes	213
	No	830
	(no response)	57

CFA

- No problems skewness/kurtosis
- Imputation of missing data
 - “Amelia” package on default settings
 - 20 imputed datasets created and averaged
- Cronbach’s alpha for CSWI and themes
 - reliability: $.79 \leq \alpha \leq .94$
- CFA “Lavaan” package
 - Items specified to load freely on their intended factor
 - Indices showed good fit

Fit indices

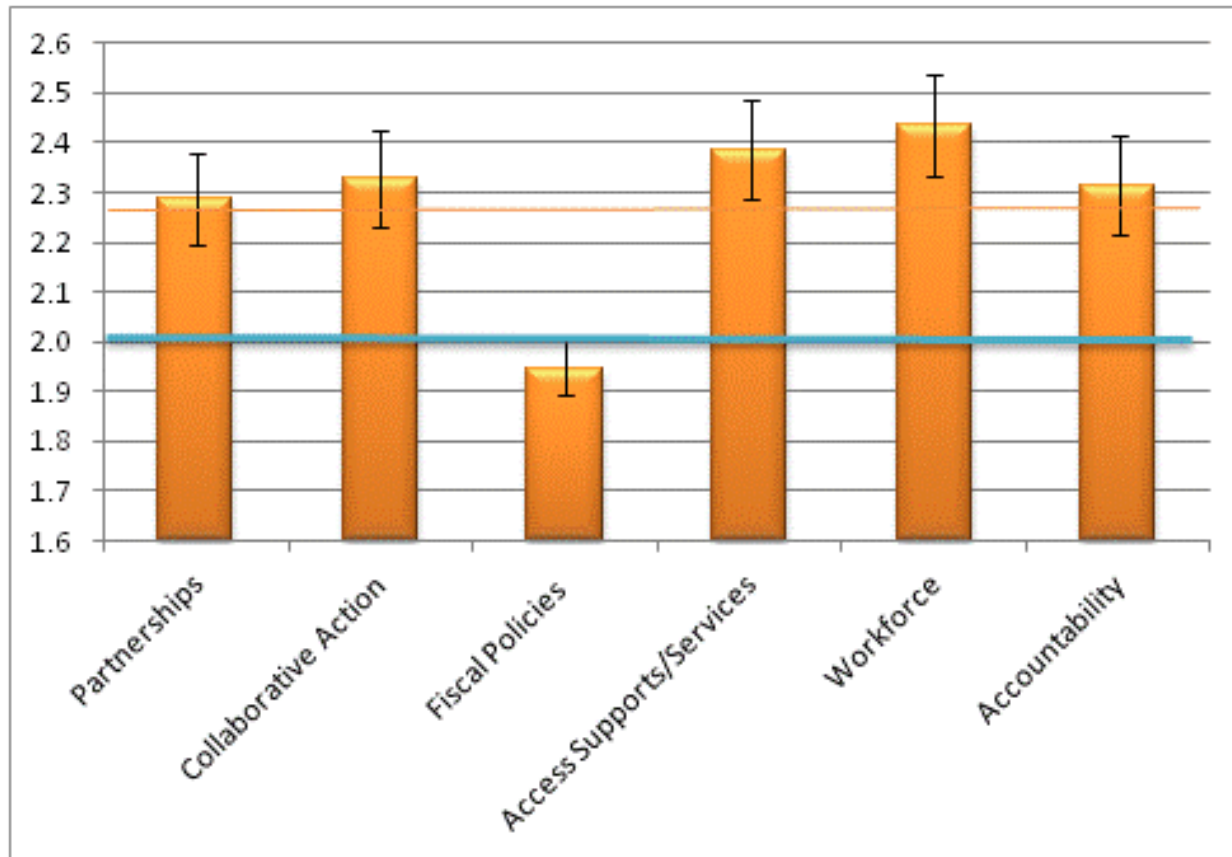
	χ^2/df	TLI	RMSEA	RMSEA p-Value	SRMR
Partnerships	3.55	0.98	0.06	0.26	0.02
Collaborative Action	3.62	0.98	0.06	0.07	0.02
Workforce	2.30	0.99	0.05	0.40	0.01
Fiscal Policies and Sustainability	3.53	0.98	0.06	0.08	0.02
Access to Needed Supports and Services	3.60	0.98	0.07	0.10	0.02
Accountability	2.18	0.99	0.05	0.36	0.02
CSWI	2.06	0.91	0.07	0.11	0.06
Conventional Comparison	$\chi^2 \leq 2 - 5$	$TLI \geq .9$	$RMSEA < .09$	$p \geq .05$	$SRMR < .08$

χ^2 chi-square (degrees of freedom), CFI comparative fit index, RMSEA root mean square error of approximation, CI confidence interval, SRMR standardized root mean square residual, TLI Tucker Lewis Index

Intraclass correlations

	ICC
Partnerships	0.177
Collaborative Action	0.153
Workforce	0.121
Fiscal Policies and Sustainability	0.149
Access to Needed Supports and Services	0.170
Accountability	0.132
CSWI	0.150

CSWI Theme Means



Specific Areas of Greatest Challenge

- Community Stakeholders
- Removing Fiscal Barriers
- Influential Youth/Young Adult Voice
- Collective Fiscal Responsibility
- Sustained funding
- Fiscal Monitoring
- Fiscal Understanding
- Compensation for Wraparound Staff
- Addressing Barriers

Specific Areas of Greatest Challenge

- **Community Stakeholders**
- **Removing Fiscal Barriers**
- **Influential Youth/Young Adult Voice**
- **Collective Fiscal Responsibility**
- **Sustained funding**
- **Fiscal Monitoring**
- **Fiscal Understanding**
- Compensation for Wraparound Staff
- Addressing Barriers

Specific Areas of Greatest Strength

- Community Team
- Professional Development
- Empowered Community Team
- Grievance Procedure
- Supervision
- Caseload Sizes
- Service/Support Quality
- Wraparound Job Expectations
- Full Agency Support

Specific Areas of Greatest Strength

- **Community Team**
- **Professional Development**
- **Empowered Community Team**
- Grievance Procedure
- **Supervision**
- **Caseload Sizes**
- Service/Support Quality
- **Wraparound Job Expectations**
- **Full Agency Support**

CSWI/Theme Scores Predicted by Mean Experience with Wraparound

	Estimate	p	Adj. R2
Partnerships	0.06	0.07†	0.20
Collaborative Action	0.06	0.14	0.11
Fiscal Policies and Sustainability	0.13	0.03*	0.32
Access to Needed Supports and Services	0.06	0.07†	0.20
Workforce	0.06	0.22	0.05
Accountability	0.04	0.44	0.03
CSWI	0.07	0.06†	0.23

N=sites (35)

CSWI/Theme Scores Predicted by Difference between Individual and Site Scores

	Estimate	p	Adj. R2
Partnerships	0.00	0.48	0.00
Collaborative Action	0.00	0.44	0.00
Fiscal Policies and Sustainability	0.00	0.96	0.00
Access to Needed Supports and Services	0.00	0.76	0.00
Workforce	0.00	0.49	0.00
Accountability	-0.01	0.40	0.00
CSWI	0.00	0.86	0.00

N=respondents (1100)

Acknowledgments/Funders



The development of the contents of this presentation were supported by funding from the National Institute of Disability and Rehabilitation Research, United States Department of Education, and the Center for Mental Health Services Substance Abuse and Mental Health Services Administration, United States Department of Health and Human Services (NIDRR grant H133B090019). The content does not represent the views or policies of the funding agencies. In addition, you should not assume endorsement by the Federal Government.



Theme Structure of the Community Supports for Wraparound Inventory (CSWI)

THE CSWI INCLUDES 42 ITEMS GROUPED INTO SIX THEMES:

Theme 1: Community Partnership. *Collective community ownership of and responsibility for Wraparound is built through collaborations among key stakeholder groups.*

Theme 2: Collaborative Action. *Stakeholders take concrete steps to translate the Wraparound philosophy into concrete policies, practices and achievements.*

Theme 3: Fiscal Policies and Sustainability. *The community has developed fiscal strategies to meet the needs of children participating in Wraparound and methods to collect and use data on expenditures for Wraparound-eligible children.*

Theme 4: Access to Needed Supports & Services. *The community has developed mechanisms for ensuring access to Wraparound and the services and supports that teams need to fully implement their plans.*

Theme 5: Human Resource Development & Support. *The community supports wraparound and partner agency staff to work in a manner that allows full implementation of the wraparound model.*

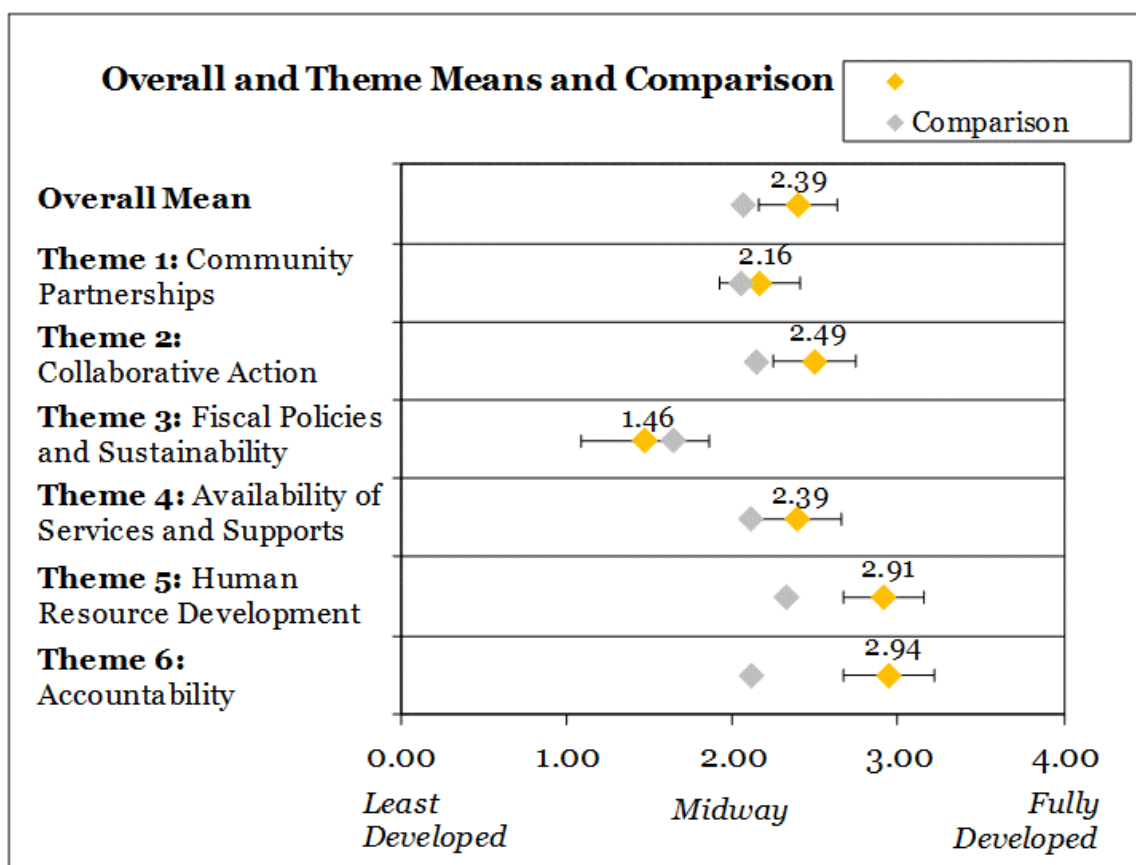
Theme 6: Accountability. *The community has implemented mechanisms to monitor wraparound fidelity, service quality, and outcomes, and to assess the quality and development of the overall wraparound effort.*

Each item has two “anchor” descriptions:

- “Least developed”—absence of collaboration
- “Fully developed”—seamless support and collaboration

Each item rated on a 5-point scale

- “don’t know” option



Fit indices

	χ^2/df	TLI	RMSEA	RMSEA p-Value	SRMR
Partnerships	3.55	0.98	0.06	0.26	0.02
Collaborative Action	3.62	0.98	0.06	0.07	0.02
Workforce	2.30	0.99	0.05	0.40	0.01
Fiscal Policies and Sustainability	3.53	0.98	0.06	0.08	0.02
Access to Needed Supports and Services	3.60	0.98	0.07	0.10	0.02
Accountability	2.18	0.99	0.05	0.36	0.02
CSWI	2.06	0.91	0.07	0.11	0.06
Conventional Comparison	$\chi^2 \leq 2 - 5$	$TLI \geq .9$	$RMSEA < .09$	$p \geq .05$	$SRMR < .08$

χ^2 chi-square (degrees of freedom), CFI comparative fit index, $RMSEA$ root mean square error of approximation, CI confidence interval, $SRMR$ standardized root mean square residual, TLI Tucker Lewis Index